



MONTHLY MEMBERSHIP PROGRESS REPORT

District 5M 6

Results as of: 06/30/2018

GMT: MICHAEL MOLEND

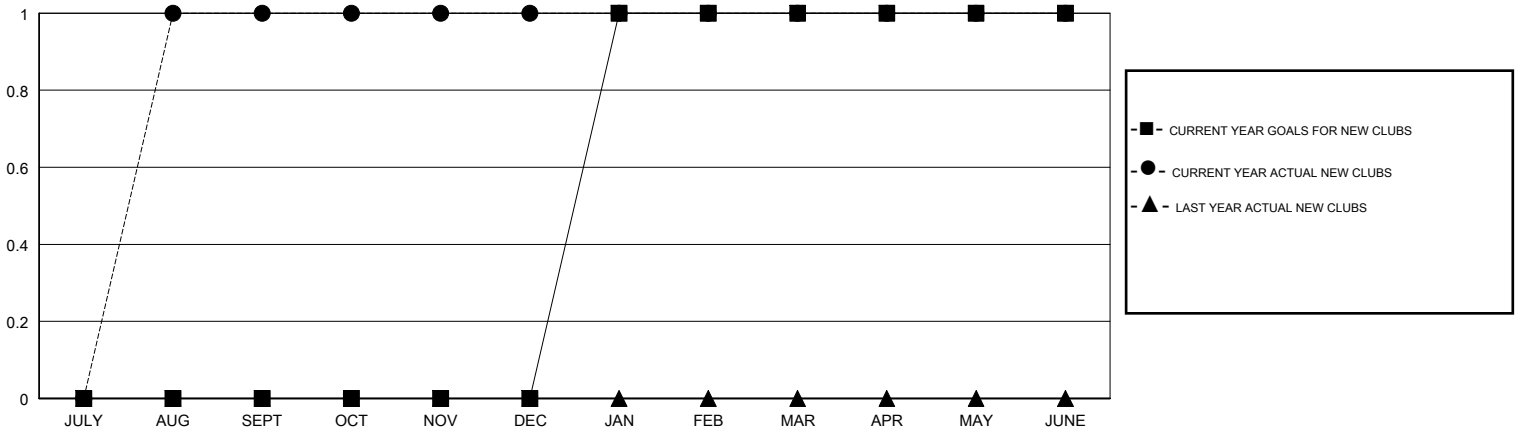
LOCATION MINNESOTA

GMT CA

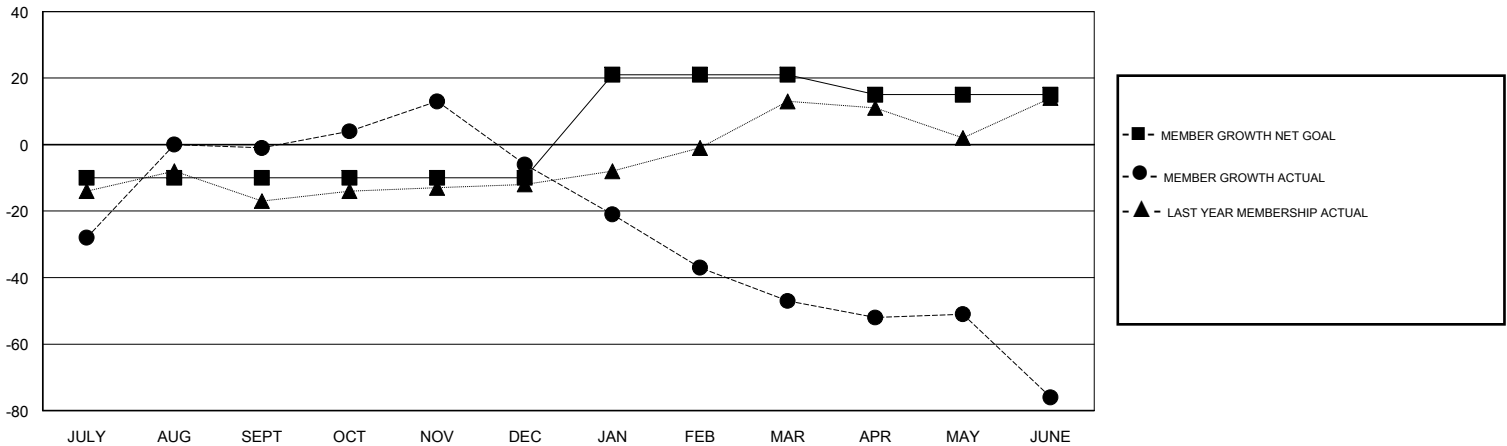
Clubs			
RESULTS FOR 2017-2018			
QUARTER	NEW CLUB GOAL	NEW CLUBS	DROPPED CLUBS
JULY/AUG/SEPT	0	1	0
OCT/NOV/DEC	0	0	0
JAN/FEB/MAR	1	0	0
APR/MAY/JUNE	0	0	2

Members			
RESULTS FOR 2017-2018			
QUARTER	MEMBER GROWTH NET GOAL	MEMBER GROWTH ACTUAL	DROPPED MEMBERS ACTUAL (including transfers)
JULY/AUG/SEPT	-10	58	55
OCT/NOV/DEC	0	50	48
JAN/FEB/MAR	31	19	58
APR/MAY/JUNE	-6	56	80

GOALS AND ACTUAL NEW CLUBS CUMULATIVE



GOALS AND ACTUAL MEMBERS CUMULATIVE



DROPPED CLUBS: 2	28 CLUBS OF 38 ADDED 1 OR MORE NEW MEMBERS	<u>GENDER DISTRIBUTION</u> MALE 959 (68.01%) FEMALE 451 (31.99%) Women Percentage Fiscal Year Goal: 31%
<u>DROPPED MEMBERS</u> DECEASED 24 CLUB CANCELLED 14 OTHER 203 TOTAL 241	CLICK HERE FOR CUMULATIVE MEMBERSHIP DATA	TOTAL FAMILY UNIT MEMBERS 0 FAMILY MEMBERS PAYING HALF DUES 0